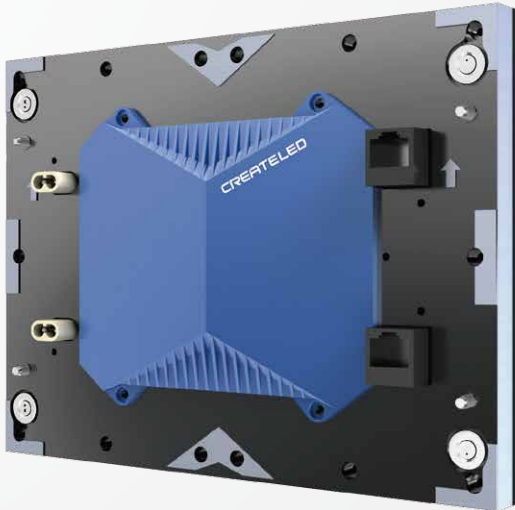


AirIM

Intelligent Display Unit

Each Module Works as a Discrete Display Device
Fine Pixel Pitch: Ideal for 4K or 8K Resolutions
Ultra Slim and Lightweight
Countless Applications



Integrated Power and Signal Cables

- › The power and data connectors are integrated into each module, resulting in stable structure that is easy to assemble and no additional space required behind the display.

Super Slim

- › One AirIM module has the depth of only 15 mm.

Super Lightweight

- › One module of AirIM weighs in at a mere 500 grams making the LED display one of the lightest available on the market, hence very easy to install and handle.

External 48 Volts DC to DC Power Supply

- › Better and most efficient power distribution resulting in lower power consumption and less heat to dissipate.

Aspect Ratio Friendly

- › AirIM is designed with common aspect ratios in mind, with 200 x 150 mm sized module the 16:9 and 4:3 screens are achieved easily.

Countless Applications

- › Light as a feather to fly and sturdy enough to stack. Front serviceable modules are suitable for wall mounting making the AirIM on of the most versatile LED displays on the market.

Discrete Display Unit

- › An FPGA chip embedded in each module and Cat 7 cabling enable enhanced video processing performance with 12-bits color depth.

High Definition

- › Finest pixel pitch starting from 0.833 mm is ideal for achieving 4K and 8K resolution.



Ultra HD

AirIM / Specifications

	AirIM
Physical Pitch	1.25 mm
Pixel Configuration	SMD 0808
Pixel Density	172,800 pixels/panel
LED Module Dimensions (mm)	200 × 150
Panel Dimensions (W × H × D) (mm)	200 × 1,350 × 47
No. of Modules Per Panel (W × H)	1 × 9
Physical Resolution of Module (W × H)	160 × 120
Physical Resolution of Panel (W × H)	160 × 1,080
Weight Per Panel	8.3 kg/panel
Processing	16 bit
Colours	281 trillion
Contrast Ratio	4,000 : 1
Average Power Consumption	54 - 88 w/panel
Max Power Consumption	180 w/panel
Operating Temp/Humidity	-10 - 40°C/10% - 60%
Storage Temp/Humidity	-30 - 60°C/10% - 60%
Brightness	600 - 800 nits
Refresh Rate	1,920 - 3,840 Hz
Horizontal Viewing Angle	160°
Vertical Viewing Angle	140°
Expected LED Lifetime (Max)	100,000 Hrs
Max Stacking	8 panels
Max Hanging	8 panels
Servicing	Front
IP Rating	IP 30
Certification	CE, EMC ClassA, ETL, RoHS

Typical Applications

- › Monitoring, command and control centre
- › Shopping mall
- › Opera house
- › Car show
- › Corporate conference and atrium venues
- › Theatre stage design
- › High-level video conferencing
- › Reception hall
- › Window display
- › Airport
- › Education, lecture halls
- › House of Worship